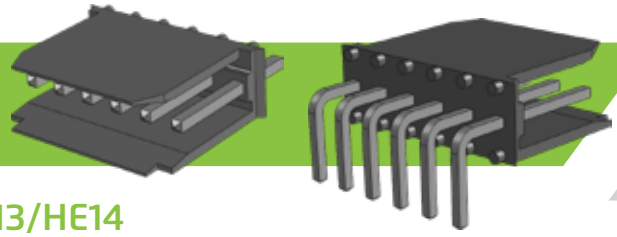


2.54mm PCB Connectors



MPTH Series Straight and Right Angle HE13/HE14 Walled PCB Headers

PRODUCT DETAILS

The Flex Connection range of 2.54mm HE13/HE14 PCB Headers are ideal for mating with the MHE range of housings. This industry standard range of connectors provide built in low profile polarisation and latching. The connectors are manufactured using Black Polyester UL 94 VO insulator and 0.64mm square Gold or Tin plated pins are available as standard. With a Current Rating of 3A these PCB connectors have a temperature range of -40 Deg C to + 150 Deg C.

FEATURES



Quality Design

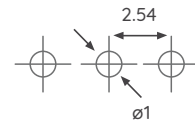
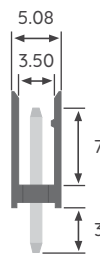
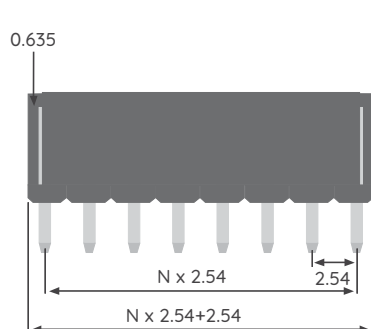


Cost-Effective

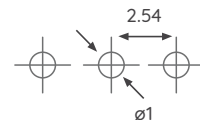
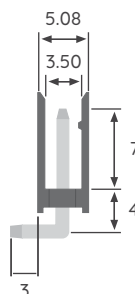
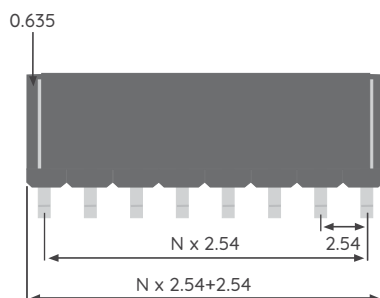
DIMENSION OUTLINE

RECOMMENDED PCB LAYOUT

SINGLE ROW STRAIGHT



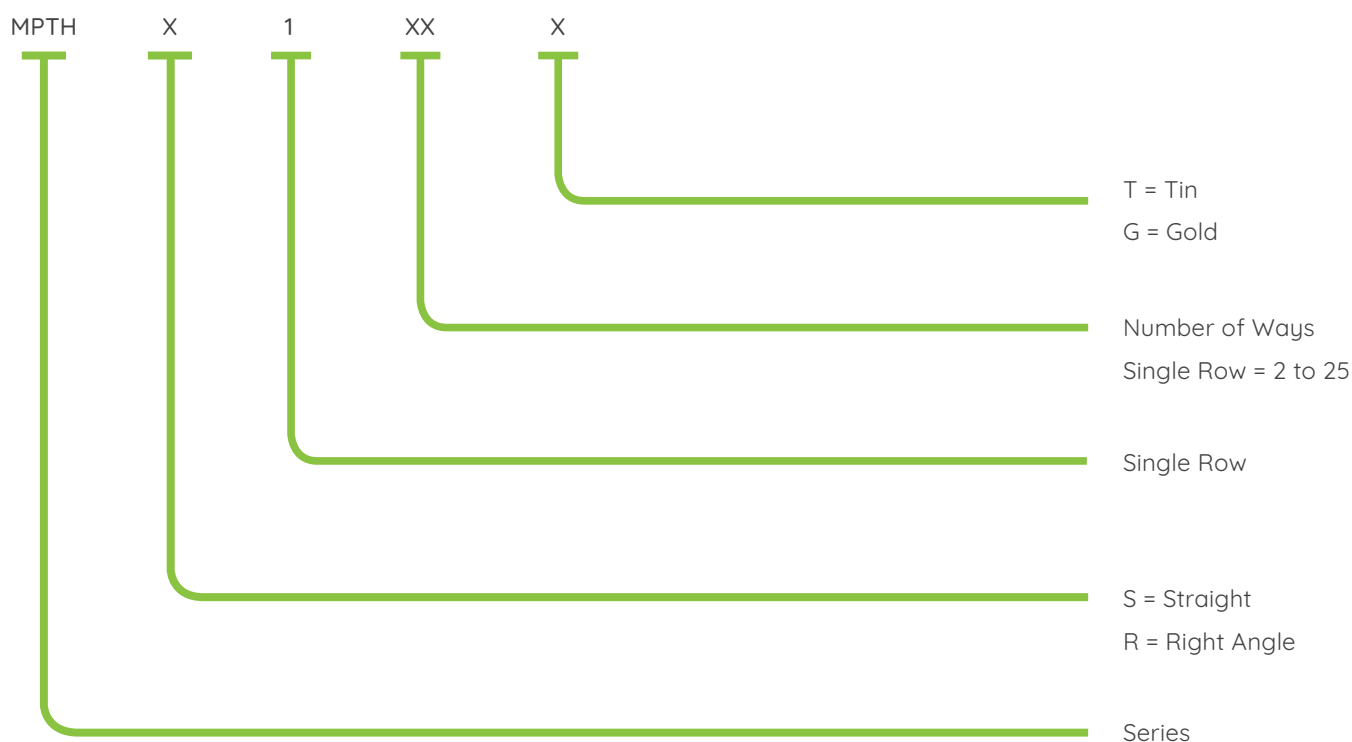
SINGLE ROW RIGHT ANGLE



ELECTRICAL AND MECHANICAL PROPERTIES

Pitch	2.54mm
Contact Pin	0.64mm Square
Insulator Material	Black Polyester UL 94V-O
Mating Housing	MHE Housing
Number of Ways	2 to 25 ways
Plating Options	Tin or Gold
Current Rating	3A AC, DC
Withstanding Voltage	500V AC
Temperature Range	-40 Deg C to + 150 Deg C
Insulation Resistance	1000 MΩ

PART NUMBERING BREAKDOWN



1st Jan 2017 Issue 1

2025 Flex Connection

flexconnection.global

Europe

Unit 8 Campus Five
Third Avenue Letchworth
Hertfordshire SG6 2JF
United Kingdom
T +44 1462 341125
F +44 1462 677499
E sales@flexconnection.eu

North America

4500 Red Arrow Hwy Unit E
Stevensville
Michigan
49127 USA
T +1 269 408 8400
F +1 269 593 5952
E sales@flexconnection.net

Hong Kong

Unit 5/6 6F Westley Square
48 Hoi Yuen Road
Kwun Tong
Hong Kong
T +852 3523 1884
F +852 3747 8980
E sales@flexconnection.asia

China

Unit 613A-615 Floor 6 Block
A Commercial Bldg 99 Dahe
Road Guanlan Long Hua
District Shenzhen China
T +86 755 2798 1678
F +86 755 2263 8887
E sales@flexconnection.cn

Brazil

Avenida Cassiano Ricardo
nº 601 Sala 61 Jd. Aquarius
Ed. The One Office Tower
São José dos Campos
SP 12246-870 Brazil
T +55 11 99013-3030
E sales@flexconnection.com.br