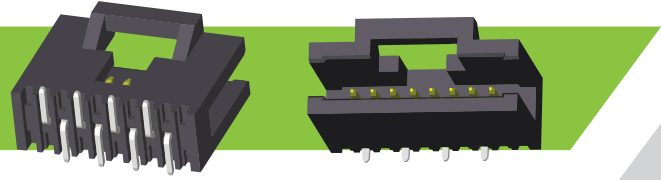


## 1.27mm Latching Pin Headers

### Single Row SMT Straight/Vertical



## MPSBWS Series SMT Walled Latching Straight/Vertical Pin Headers

### PRODUCT DETAILS

The Flex Connection range of 1.27mm Shrouded and Unshrouded Board Mounted PCB connectors provide a reliable high density interconnect system. We offer the widest range of product available on the market with single row and double row products with and without shroud and also in thru hole and SMD versions. Options for the shrouded connectors includes Right Angle, Vertical, Thru Hole, SMD in both Vertical and Right Angle with or without Fixing Pins. Product is supplied as standard with Gold plating in the contact area. These connectors are ideal to use to mate with high density 1.27mm connectors on Flexible Cables, Flexible Circuits and Membrane Switches.

### FEATURES



Quality Design



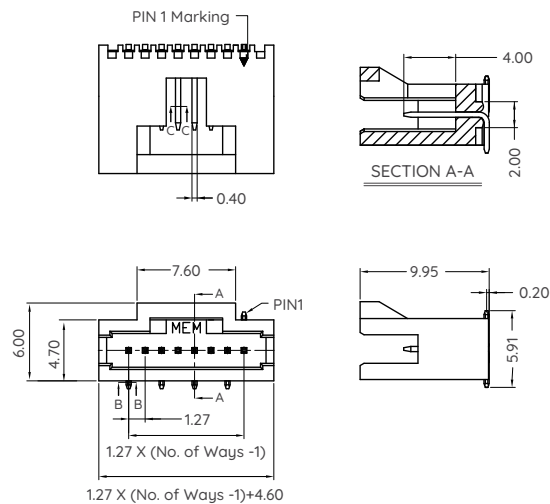
Cost-Effective

### MATING CONNECTOR

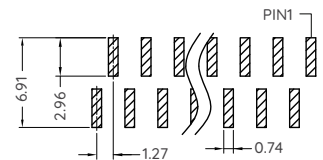
### DIMENSION OUTLINE



MH545



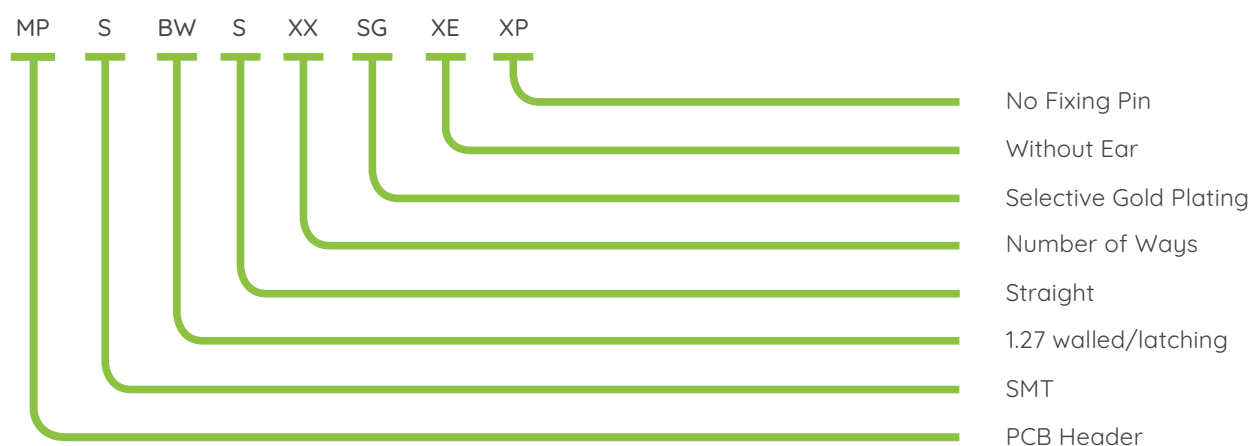
### Recommended P.C.B Layout (Top Side) (PCB BOARD TOLERANCE $\pm 0.05$ )



## ELECTRICAL AND MECHANICAL PROPERTIES

Pitch	1.27mm
Contact Pin	0.40mm Square
Insulator Material	PA9T + 30% GF UL 94V-O
Mating Housing	MH545 Latching Housing
Number of Ways	4 to 50 ways
Contact Material	Phosphor Bronze
Contact Area Plating	Gold over Nickle
Solder Pins Plating	Tin Plated over Nickle
Current Rating	2A AC, DC
Contact Resistance	>20m $\Omega$
Rated Voltage	300 VRMS
Withstanding Voltage	900 VRMS
Breakdown Voltage	1200 VRMS
Insulation Resistance	1000 M $\Omega$ @ 500VRMS
Operating Temperature Range	-40 Deg C to + 125 Deg C
Insulation Resistance	1000 M $\Omega$
Mechanical Endurance	500 Operations
Forces	Mating: 2N/Contact Max Unmating: 0.2N/Contact Min

## PART NUMBERING BREAKDOWN



1st Jan 2017 Issue 1

2025 Flex Connection

flexconnection.global

### Europe

Unit 8 Campus Five  
Third Avenue Letchworth  
Hertfordshire SG6 2JF  
United Kingdom  
T +44 1462 341125  
F +44 1462 677499  
E sales@flexconnection.eu

### North America

4500 Red Arrow Hwy Unit E  
Stevensville  
Michigan  
49127 USA  
T +1 269 408 8400  
F +1 269 593 5952  
E sales@flexconnection.net

### Hong Kong

Unit 5/6 6F Westley Square  
48 Hoi Yuen Road  
Kwun Tong  
Hong Kong  
T +852 3523 1884  
F +852 3747 8980  
E sales@flexconnection.asia

### China

Unit 613A-615 Floor 6 Block  
A Commercial Bldg 99 Dahe  
Road Guanlan Long Hua  
District Shenzhen China  
T +86 755 2798 1678  
F +86 755 2263 8887  
E sales@flexconnection.cn

### Brazil

Avenida Cassiano Ricardo  
n° 601 Sala 61 Jd. Aquarius  
Ed. The One Office Tower  
São José dos Campos  
SP 12246-870 Brazil  
T +55 11 99013-3030  
E sales@flexconnection.com.br